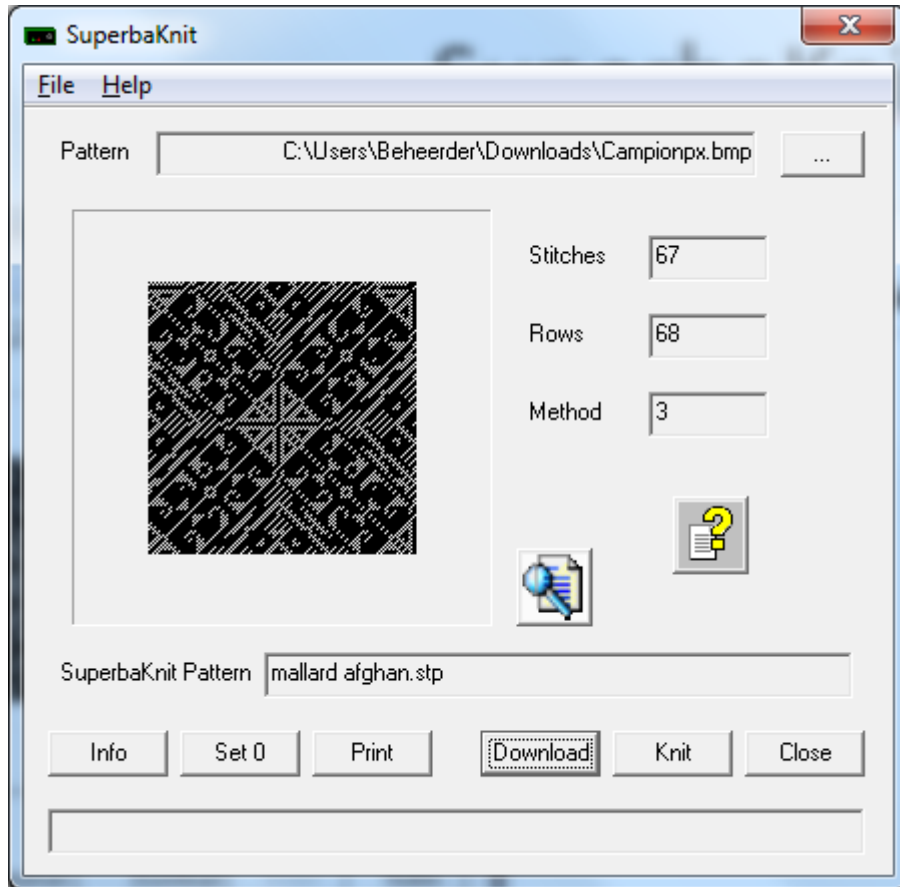


SuperbaKnit & Paint

Method 3 for black and white picture

SuperbaKnit & Paint



The problem:

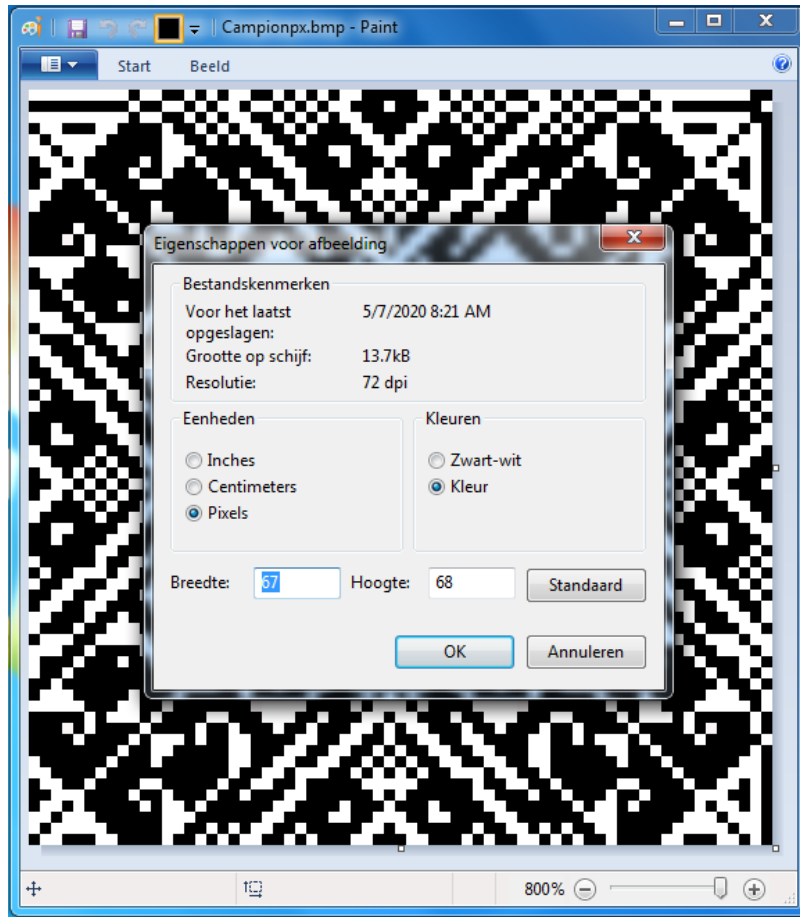
The picture to the left shows that the knitting Method is 3.

Method 3 means that there are 3 colors in the pattern.

At first sight it looks like a black and white picture which is 2 colors.

How can MS Paint help us?

SuperbaKnit & Paint



The first thing to do is to work out the Properties of the bmp file.

Some versions of Paint have a menu item titled Properties. Other, older, versions of Paint have the properties information in a menu item titled attributes.

You can see here that Campionpx is a color bitmap.

When there is a small deviation from white or black, it will be rather hard to recognise.

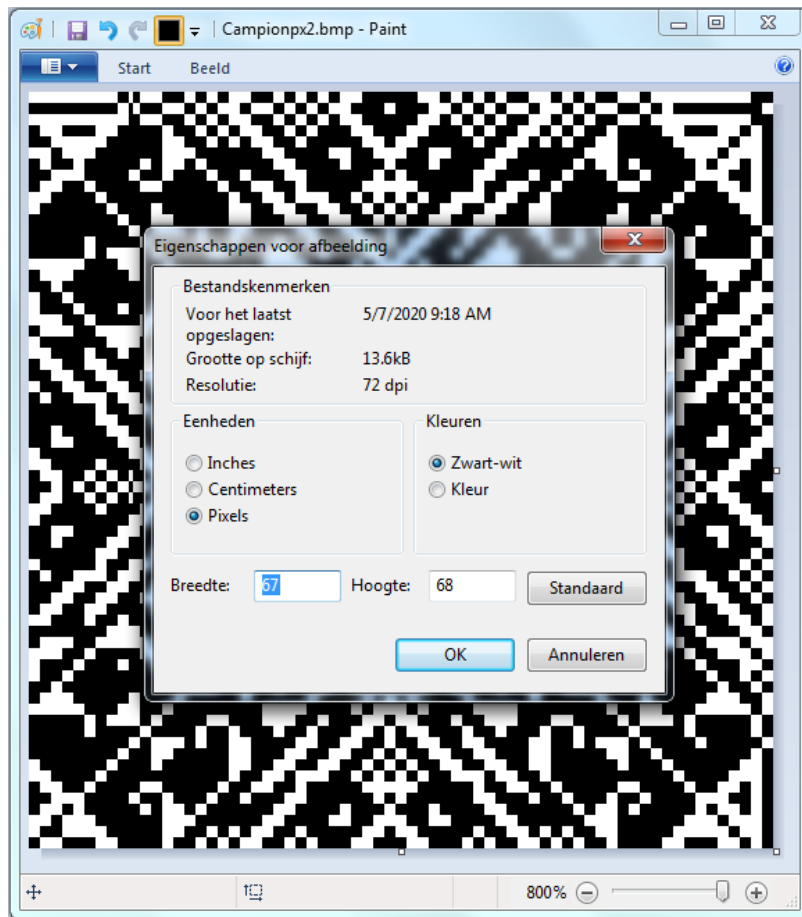
All versions of Paint can change from color to black-white.

Make sure you have a backup of the picture.

Click on the radio button; you will get a warning that detail may be lost; accept that.

Now you have a black and white picture.

SuperbaKnit & Paint

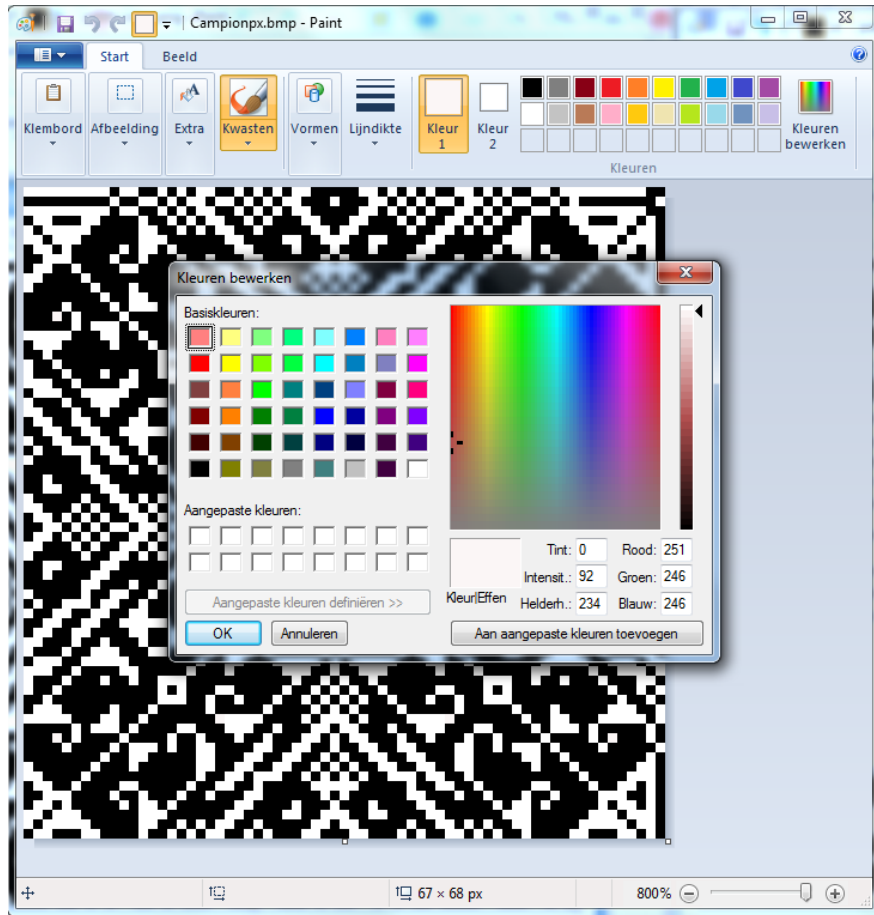


The new picture is now black and white.

During the conversion process I noticed that a small change happened.

When looking a bit closer at both the color and the black and white picture, I found the change.

SuperbaKnit & Paint



There is at least one pixel that is not white:

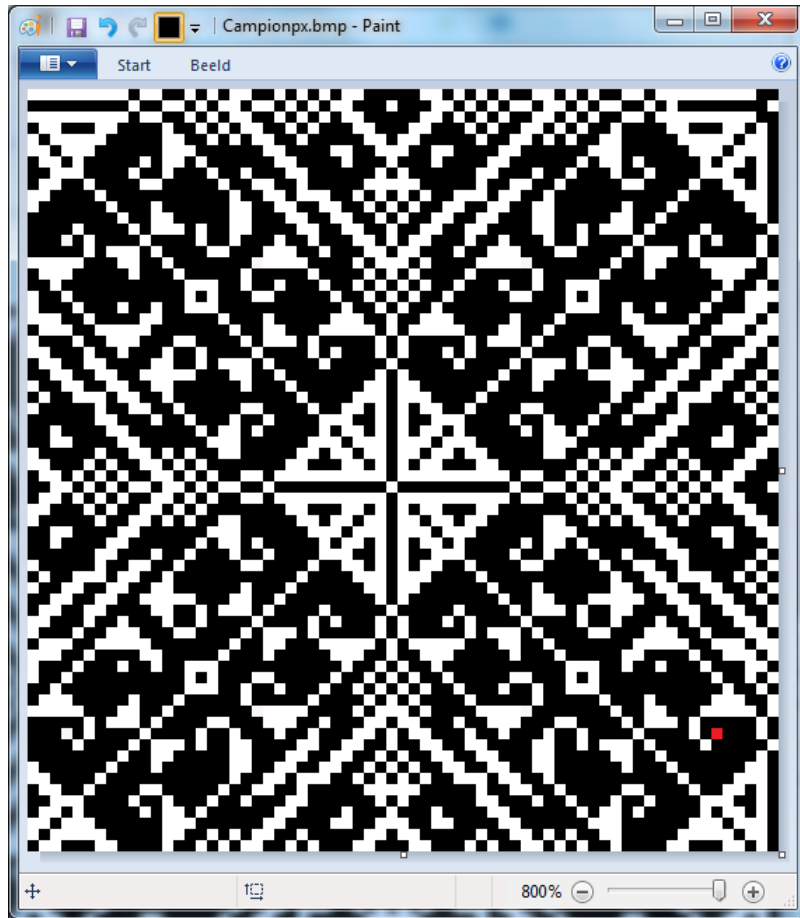
The RGB value for white is 255,255,255

The pixel that is not really white is 251, 246, 246

You can get this information from the color palette.
The color palette can be found in Edit colors.

You select the color of the pixel by using the pipette and clicking on the pixel.

SuperbaKnit & Paint



The pixel that wasn't completely white is now marked red.

When you convert from color to black and white, Paint makes all pixels that are not 100 % white into black.

You need to visually inspect where Paint "damaged" your picture.